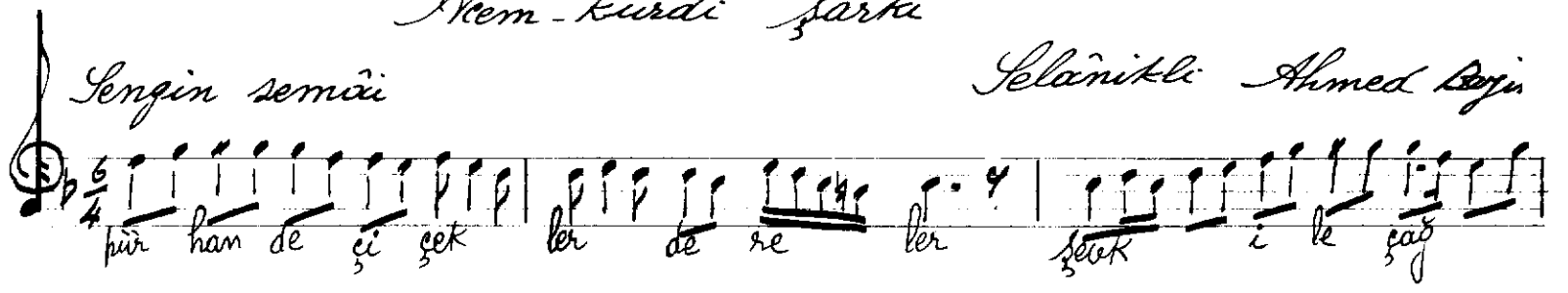
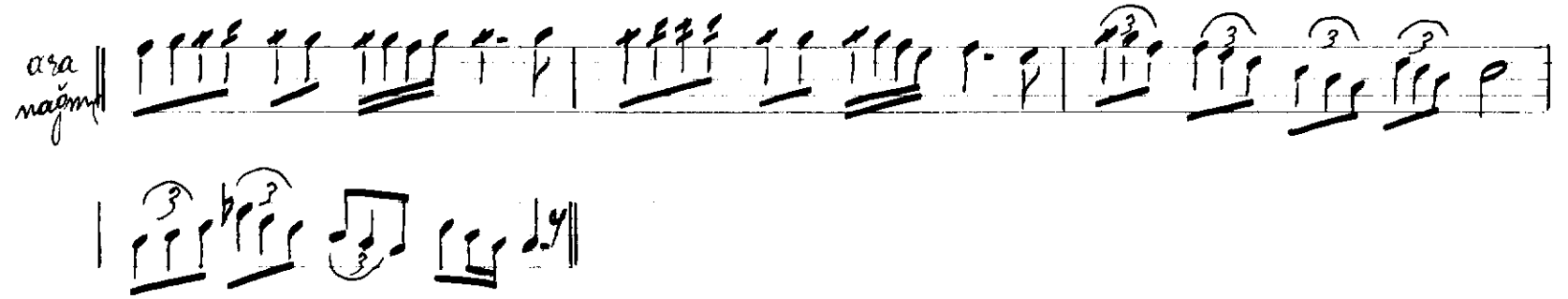
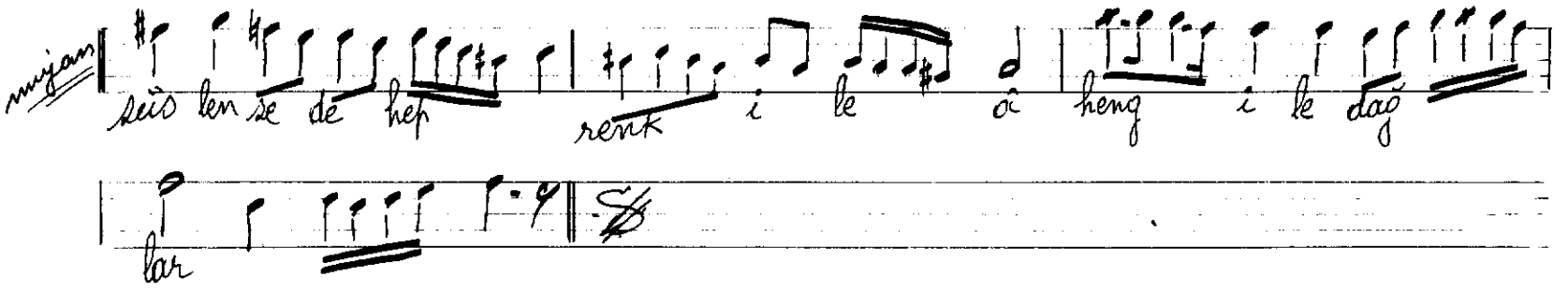
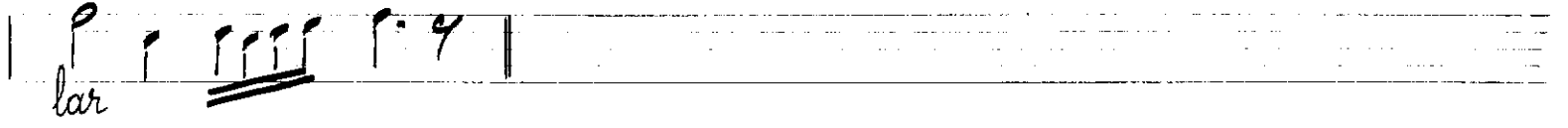


Mem-kürdi şarkı



İslâmîkî Ahmed Bâzî



Pür han de çi çek ler, dereler şek ile çay lar
Hic rin le bu rû hum fa kat öksüz gi li ağı lar
Süs len se de hep renk ile, â heng ile dağ lar
Rû hum yi ne hic rin le bu öksüz gi li ağı lar

2 A.

imzalı